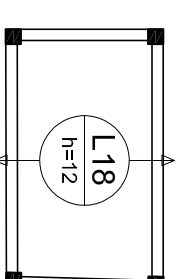
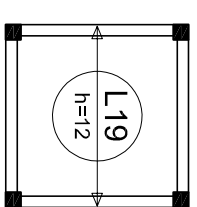
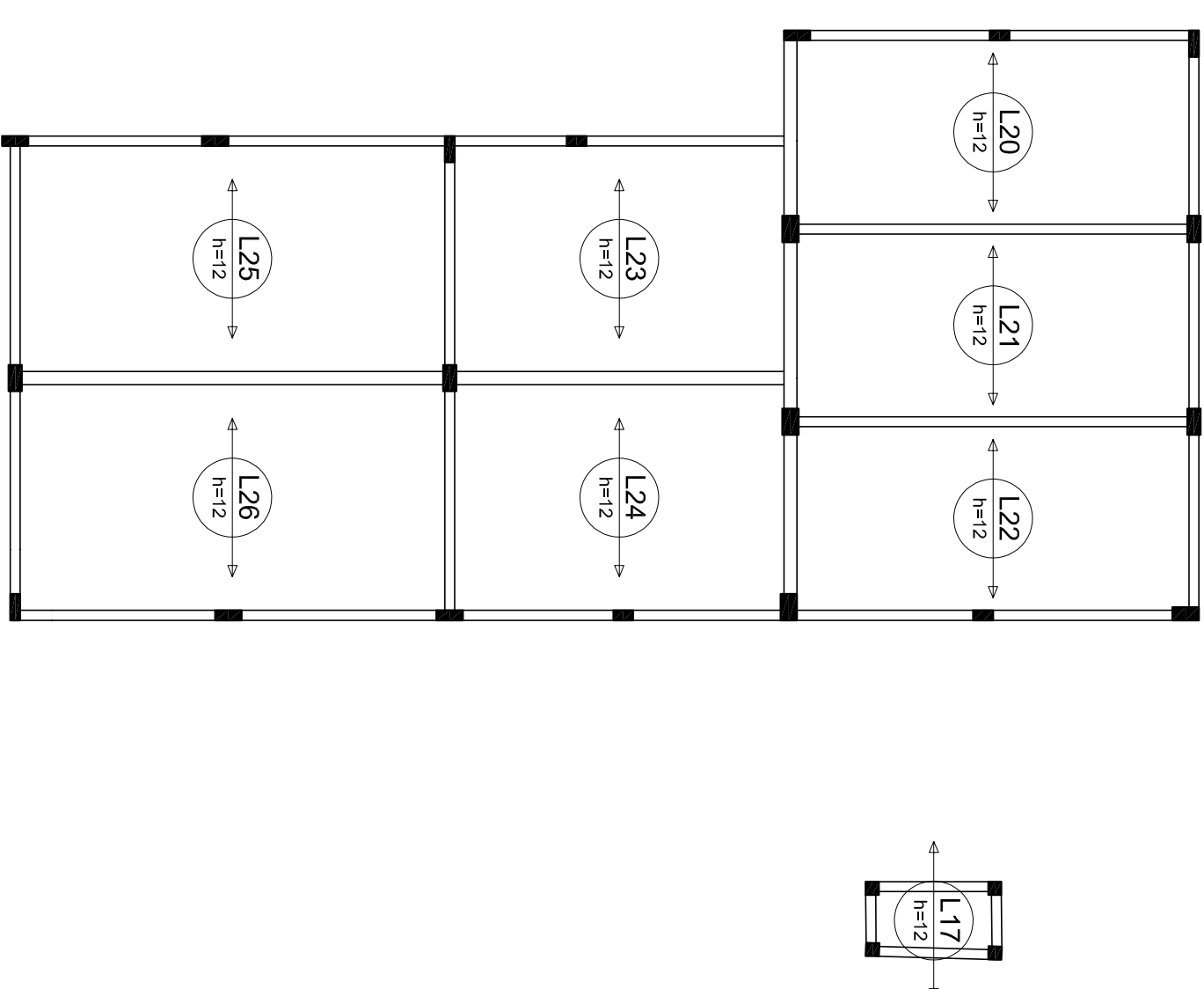


Relação do aço					
Positivos Y					
ACO	N	DIAM	Q	UNIT (cm)	C.TOTAL (cm)
CA50	1	10.0	3	449	1347

Resumo do aço				
ACO	DIAM	C.TOTAL (m)	PESO (kg)	PESO + 10 %
CA50	10.0	13.5		9.1
PESO TOTAL				
CA50				9.1



Armação positiva das lajes do pavimento COBERTURA (Eixo Y)

[illegible]